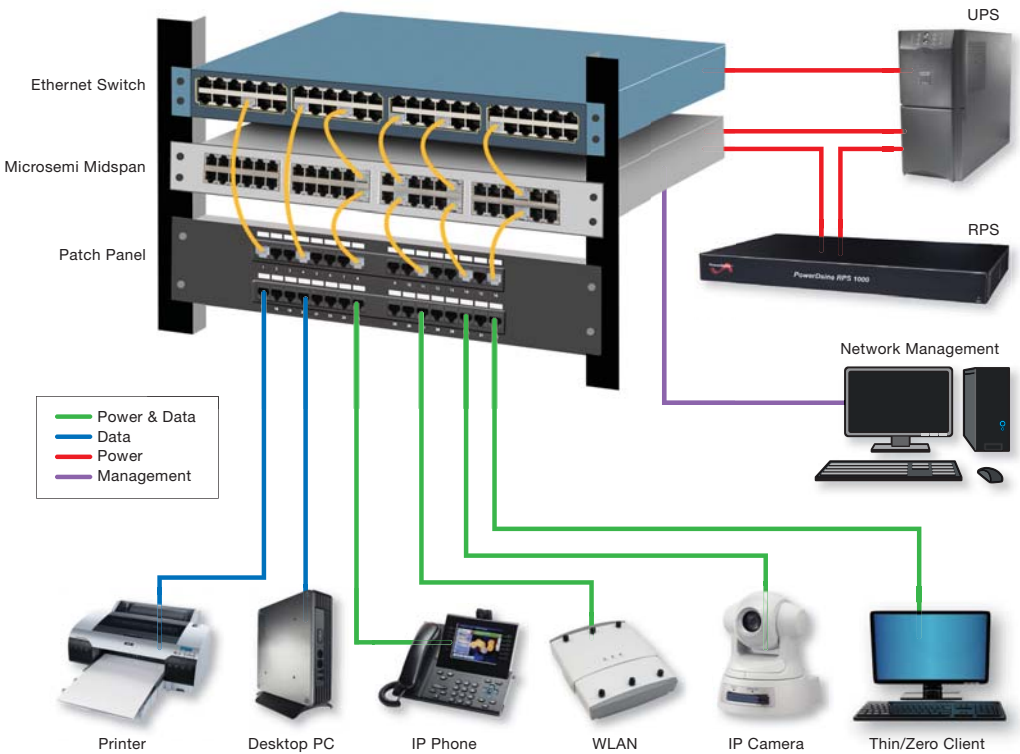


PowerDsine[®] Products Catalog



How will you



power that?

PowerDsine® PoE Midspans

Providing easy, low-cost power over new and existing Ethernet infrastructure

PowerDsine® PoE Systems from Microsemi® enable delivery of up to 60 watts of scalable, energy efficient Power over Ethernet (PoE) to IP phones, WLAN access points, IP cameras, thin clients and other Ethernet devices using existing CAT-5 or better cabling. PowerDsine midspans leverage Ethernet infrastructure to deliver PoE technology; eliminating the need to install separate AC power cabling, or replace existing Ethernet switches.

The exclusive PowerView Pro™ network management system (SNMPv3) allows remote management and reboot of end-terminals. PowerDsine technology is a major source of the 802.3af and 802.3at and upcoming HDBaseT standards, and the leader in providing high power PoE business communication solutions.

PowerDsine midspans now comply with the Power over HDBaseT (PoH) standard delivering up to 60W per port, while also being backwards compatible with IEEE802.3at type 1 and type 2 compliant products.

The PoH standard includes options to deliver up to 95W per port.

Non-Rackmountable Midspans



PD-3501/3501G Midspan

This single port midspan offers a solution for security network and other low port density IP Terminal installations.

- Provides 15.4W
- IEEE802.3af compliant
- 10/100/1000Mbps* data transfer rates
- PoH type 1



PD-3504G Midspan

This 4 port midspan offers a solution for IP telephones, wireless LAN access points, security network cameras and IP terminals.

- 4 ports
- IEEE802.3af compliant
- Provides 15.4W per port
- 10/100/1000Mbps data transfer rates
- PoH type 1



PD-9001G Midspan

This 30W single port midspan provides a high-power solution for remote powering of current and emerging high power applications including 802.11 access points, pan-tilt-zoom cameras, video-phones and WiMAX access points.

- Provides 30W
- IEEE802.3at compliant
- 10/100/1000Mbps data transfer rates
- PoH type 1, PoE+ including 2-event, PoH type 2



PD-9501G Midspan

This 60W single port, high power midspan enables remote powering of current and emerging high power applications including remote distance wireless IEEE802.11n access points, pan-tilt-zoom cameras, video-phones, access control, thin clients and POS.

- Provides 60W
- 10/100/1000Mbps data transfer rates
- IEEE802.3af compliant
- Energy efficient PoE (EEPoE) dissipates 60% less power when powering 25.5W devices
- PoH type 1, PoE+ including 2-event, PoH type 2

Rackmountable Midspans



PD-3500/3500G Midspan Family

This multiport midspan allows IP telephones, wireless LAN access points, security network cameras and IP terminals to receive power over standard Ethernet cables, leaving network infrastructure completely unaltered.

- 6/12/24 ports
- Provides 15.4W per port
- IEEE802.3af compliant
- 10/100/1000Mbps data transfer rates*
- PoH type 1

PD-6500/6500G Midspan Family



The remote management enabled 6500 midspans allow IP telephones, wireless LAN access points, IP cameras and many other types of data terminals to receive power, along with data, over standard Ethernet cables, leaving network infrastructure completely unaltered.

- 6/12/24 ports
- Remote power management
- Provides 15.4W per port
- 10/100/1000Mbps data transfer rates*
- IEEE802.3af compliant
- PoH type 1

PD-9000G Midspan Family



The high power, remote management enabled 9000G midspans are designed specifically to power IEEE802.11n and 802.3at access points, pan-tilt-zoom and dome network cameras, video phones, thin clients, POS systems and other end terminals.

- 6/12/24 ports
- Provides 36W per port
- 10/100/1000Mbps data transfer rates
- IEEE802.3at compliant
- Remote power management
- PoH type 1, PoE+ including 2-event, PoH type 2

PD-9500G Midspan Family

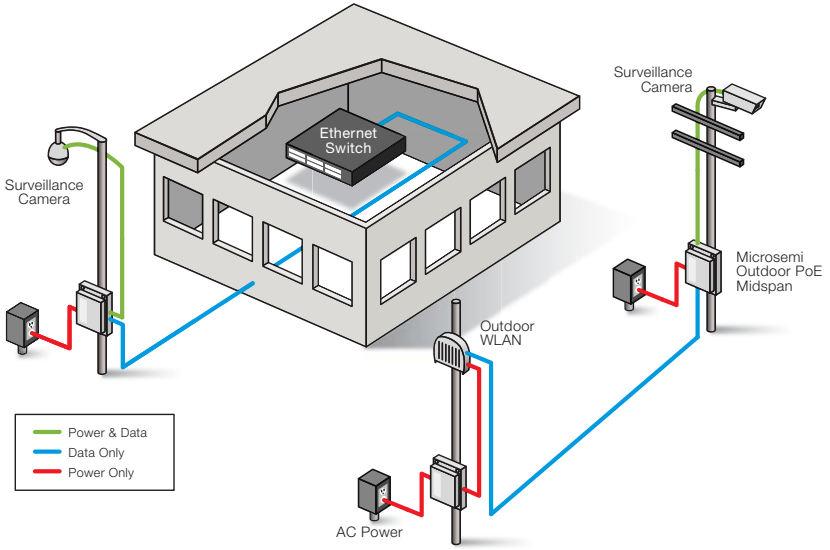


This high power, remote management enabled EEPoE midspan family is designed specifically to power IEEE802.11n and 802.3at access points, videophones, thin clients, POS systems and other end terminal that require up to 60W.

- 6/12/24 ports
- Provides 60W per port
- Remote power management
- High power over 4-pairs
- IEEE802.3at compliant
- 10/100/1000Mbps data transfer rates*
- PoH type 1, PoE+ including 2-event, PoH type 2

* Gigabit rates in G models only

Midspans for Outdoor Installations



PD-9001GO and 9501GO

- PD-9001GO: 30W
PD-9501GO: 60W
- Outdoor midspan for outdoor devices
- Outdoor rated: IP66
- Extended temperature range
PD-9001G: -40°C, +65°C
PD-9501G: -40°C, +50°C
- Fully IEEE802.3at standard compliant
- Supports 10/100/1000Mbps data rate
- Plug 'n Play installation (installer does not have to open unit)
- Supports both 802.3af and 802.3at powered devices
- Includes critical surge protection
- AC power input



PD-9001G-40/SP

- Indoor midspan for outdoor devices
- Up to 40W of power on 2-pairs
- IEEE 802.3at compliant with 2-event classification
- IEEE 802.3af backward compatible
- Surge protection according to GR 1089
- Safe and reliable power to WLAN access points
- Supports 10/100/1000Base-T applications
- Compact design with 1U height
- Supports 10/100/1000Mbps data rates
- AC power input

Green Energy Efficient PoE



Our industry-leading Energy Efficient PoE (EEPoE) technology significantly reduces power dissipation and energy consumption. EEPoE Midspans are unique in their ability to deliver power over all 4 pairs of the Cat 5 or better cable, dissipating 50% less power than PoE switches and 2-pair midspans.



PD-5524G Midspan

This high power, remote management enabled EEPoE midspan is designed specifically to power IEEE 802.11n and 802.3at access points, videophones, thin clients, POS systems and other end terminal that require up to 30W.

- 24 ports
- Provides 30W per port
- Remote power management
- High power over 4-pairs
- IEEE 802.3at compliant
- 10/100/1000Mbps data transfer rates
- PoH type 1, PoE+ including 2-event, PoH type 2



PD-9500G Midspan Family

This high power, remote management enabled EEPoE midspan family is designed specifically to power IEEE 802.11n and 802.3at access points, videophones, thin clients, POS systems and other end terminal that require up to 60W.

- 6/12/24 ports
- Provides 60W per port
- Remote power management
- High power over 4-pairs
- IEEE 802.3at compliant
- 10/100/1000Mbps data transfer rates
- PoH type 1, PoE+ including 2-event, PoH type 2

PowerView Pro™ Management

Highly secure Web-based/SNMP Remote Network Management System

Microsemi Home View System Configuration Port Configuration

View - Status Midspan Nickname: Room 3 Midspan Number 5 Energy saving: 262.3 kWatt/Year

Power (W) table:

#	1	2	3	4	5	6	7	8	9	10	11	12	13	14	15	16	17	18	19	20	21	22	23	24
Power (W)	15.04	19.02	15.04	15.04	15.04	15.04	15.04	15.04	15.04	15.04	15.04	15.04	15.04	15.04	15.04	15.04	15.04	15.04	15.04	15.04	15.04	15.04	15.04	15.04

Midspan Status Summary:

	Local	External	Total
Total Power Consumption (Watt)	75	150	225
Maximum available Power (Watt)	200	230	430
System Voltage (Volt)	48.6	-	-
Temperature (°F)	93.7	-	-
PD Detection Method	IEEE802.3af IEEE802.3at Legacy	-	-
Midspan Status	Active	-	-

UPS Power Management Summary:

Midspan UPS Powered by	Battery
Midspan UPS Battery Level(%)	68
Midspan UPS Battery Time Left (min)	25

Power Source Status Summary:

Internal (950W) Power Source	OK
External (950W) Redundancy Power Source	Fail

- SNMPv3 and web-based management
- Supports both IPv4 and IPv6 addressing
- Comes standard in the PD-6500 and PD-6500G families, PD-9500G family and PD-5524G*
- Optional feature in PD-9000 family*
- Monitors statistics, usage, and availability
- Monitors battery life in UPS and manages flow to critical and non-critical devices
- Allows devices to be remotely rebooted
- On/off scheduling allows power saving in periods of non-use as well as remote reboot capabilities to increase network efficiency and uptime

* Multiport devices only

Accessories

Family	Product Number	Description
 <p>Redundant Power Supply</p>	PD-RPS-450	450W redundant power supply, 19", 1U, supports the PD-5524G/ACDC/M, PD-9006G/ACDC/M, PD-9012G/ACDC/M, PD-9024G/ACDC/M, and 9506G/ACDC/M
	PD-RPS-1000	1000W redundant power supply, 19", 1U, supports the PD-9024G/ACDC/M/F, 9512G/ACDC/M and 9524G/ACDC/M
	PD-RPS-Cable	Spare set of cables (DC & communication) for the 9000G and 9500G midspans
 <p>802.3af Active Splitter</p>	PD-AS-601/5	Power conversion from 48V to 5V output, 2 x DC jacks: round 3.4x1.35mm and 5.5x2.5mm
	PD-AS-601/12	Power conversion from 48V to 12V output, 2 x DC jacs: round 3.4x1.35mm and 5.5x2.5mm
 <p>802.3at Active Splitter</p>	PD-AS-701/12	Power conversion from 48V to 12V output, 2 pairs, for use with PD-9000G family
	PD-AS-701/18	Power conversion from 48V to 18V output, 2 pairs, for use with PD-9000G family
	PD-AS-701/24	Power conversion from 48V to 24V output, 2 pairs, for use with PD-9000G family
	PD-AS-951/12-24	Power conversion from 48V to 12V or 24V DC output (user selectable), 4 pairs, for use with PD-9500G family
	PD-AS-951/12-24/C	Power conversion from 48V to 12V or 24V DC output (user selectable), 4 pairs with open DC wires, for use with PD-9500G family
 <p>PoE Extender</p>	PD-PoE Extender	1-port, extends PoE range by additional 100m, 802.af/802.at output power

Typical Power Consumption of Common Applications

Power Consumption	Applications	PowerDsine Solution
3-5W	IP phones	PD-3500 family PD-6500 family
5-12.95W	Wireless access points IP cameras	PD-3001/AC PD-3001G/AC PD-3500 family PD-5524G PD-6500 family
12.95-20W	802.11n Biometric access control Thin clients	PD-9000G family PD-5524G
20-25.5W	RFID readers Video IP phones PTZ IP cameras 802.16 base stations Thin client Industrial sensors	PD-9000G family PD-5524G
25.5-40W	Thin clients Video IP phones Workgroup switches Point of sales Information kiosks	PD-9000G family PD-5524G
40-51W	Ultraportable laptops Thin clients Point of sales Information kiosks	PD-9500G family
51-60W	Notebook laptops Thin clients Point of sales Information kiosks	PD-9500G family

PowerDsine Selection Guide

Indoor Midspan

Watts per Port	Product Number	Number of Ports	Remotely Managed	Gigabit	Input	Warranty	Other
15.4W	PD-3501G/AC	1		X	AC	1-year	
15.4W	PD-3504G/AC	4		X	AC	1-year	
15.4W	PD-3506/AC	6			AC	1-year	
15.4W	PD-3506G/AC	6		X	AC	1-year	
15.4W	PD-3512AC	12			AC	1-year	
15.4W	PD-3512G/AC	12		X	AC	1-year	
15.4W	PD-3524/AC	24			AC	1-year	200W total power
15.4W	PD-3524G/AC	24		X	AC	1-year	200W total power
15.4W	PD-3524G/AC/F	24		X	AC	1-year	400W total power
15.4W	PD-6506/AC/M	6	X		AC	Limited lifetime	
15.4W	PD-6506G/AC/M	6	X	X	AC	Limited lifetime	
15.4W	PD-6512/AC/M	12	X		AC	Limited lifetime	
15.4W	PD-6512G/AC/M	12	X	X	AC	Limited lifetime	
15.4W	PD-6524/AC/M	24	X		AC	Limited lifetime	200W total power
15.4W	PD-6524G/AC/M	24	X	X	AC	Limited lifetime	200W total power
15.4W	PD-6524/AC/M/F	24	X		AC	Limited lifetime	400W total power
15.4W	PD-6524G/AC/M/F	24	X	X	AC	Limited lifetime	400W total power
30W	PD-5524G/ACDC/M	24	X	X	AC & DC	Limited lifetime	450W total power
30W	PD-9001G/AC	1		X	AC	1-year	
36W	PD-9006G/ACDC/M	6	X	X	AC & DC	Limited lifetime	
36W	PD-9012G/AC	12		X	AC	Limited lifetime	
36W	PD-9012G/ACDC/M	12	X	X	AC & DC	Limited lifetime	
36W	PD-9024G/AC	24		X	AC	Limited lifetime	450W total power
36W	PD-9024G/ACDC/M	24	X	X	AC & DC	Limited lifetime	450W total power
36W	PD-9024G/DC/M	24	X	X	DC	Limited lifetime	
36W	PD-9024G/AC/F	24		X	AC	Limited lifetime	1000W total power
36W	PD-9024G/ACDC/M/F	24	X	X	AC & DC	Limited lifetime	1000W total power
72W	PD-9501G/AC	1		X	AC	1-year	
72W	PD-9506G/ACDC/M	6	X	X	AC & DC	Limited lifetime	
72W	PD-9512G/ACDC/M	12	X	X	AC & DC	Limited Lifetime	
72W	PD-9524G/ACDC/M	24	X	X	AC & DC	Limited Lifetime	

Midspans for Outdoor Installations

Watts Per Port	Product Number	Number of Ports	Remotely Managed	Gigabit	Input	Warranty	Other
30W	PD-9001GO	1		X	AC	1-year	Outdoor deployment
40W	PD-9001G-40/SP/AC	1		X	AC	1-year	Indoor deployment
60W	PD-9501GO/AC	1		X	AC	1-year	Outdoor deployment

PowerDsine[®]

PoE Midspans

PowerDsine@microsemi.com



Microsemi Corporate Headquarters
One Enterprise, Aliso Viejo, CA 92656
Phone: 949.380.6100 Fax: 949.215.4966
www.microsemi.com

Microsemi Corporation (Nasdaq: MSCC) offers a comprehensive portfolio of semiconductor solutions for: aerospace, defense and security; enterprise and communications; and industrial and alternative energy markets. Products include high-performance, high-reliability analog and RF devices, mixed-signal and RF integrated circuits, customizable SoCs, FPGAs, and complete subsystems. Microsemi is headquartered in Aliso Viejo, Calif.

Learn more at www.microsemi.com/PowerDsine.

©2012 Microsemi Corporation. All rights reserved. Microsemi and the Microsemi logo are trademarks of Microsemi Corporation. All other trademarks and service marks are the property of their respective owners.

MSC-005-12